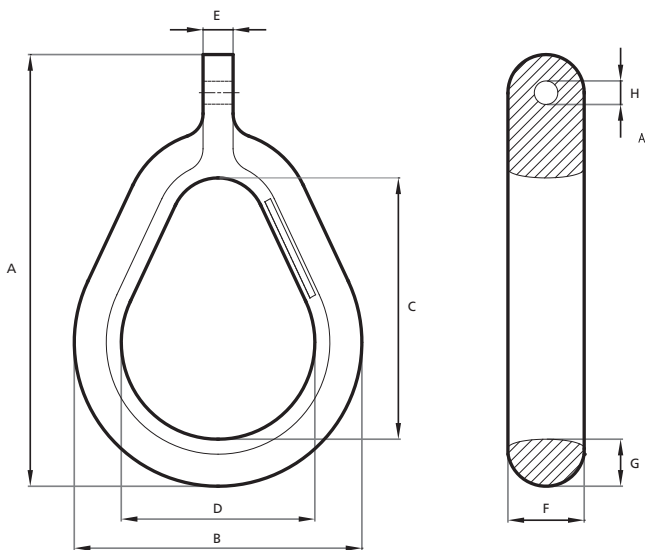




CHASER

PERMANENT CHASER



Type	A	B	C	D	E	F	G	H	SWL	Proof Load
	mm	mm	mm	mm	mm	mm	mm	mm	tonnes	tonnes
SOT110	1867	1245	1130	838	130	330	203	102	130	250
SOT4110	2040	1301	1130	838	191	406	261	144	250	350

Note: The measurements in tables may vary between different models. Sotra Anchor & Chain AS can not be hold responsible for any deviate between tables and delivered equipment.