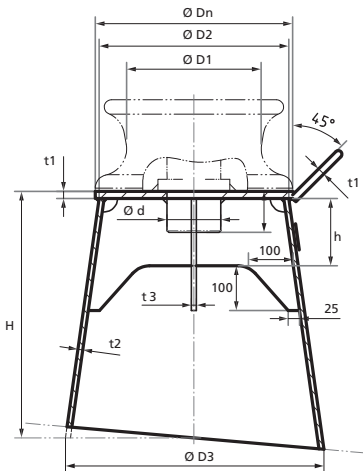




PEDESTAL ROLLER

ISO 13776



Isometric view not to scale.

Nom. size	D1	D2	d	h	h1	t1	t2	t3	SWL (t)		Weight
									$\text{Ø} = 90^\circ$	$\text{Ø} = 0^\circ$	
Dn											H = 1000 mm
mm	mm	mm	mm	mm	mm	mm	mm	mm	mm	mm	
150	220	230	71,5	200	100	16	10	16	27	19	115
200	288	300	93,5	200	100	20	12	20	45	32	169
250	357	370	113,5	200	100	22	12,5	22	59	42	210
300	417	430	128,5	225	125	24	13	24	74	52	256
350	472	490	145,5	225	125	26	17	26	106	75	358
400	540	560	154,5	250	150	28	18	28	127	90	436
450	600	620	167,5	250	150	30	20	30	163	115	530
500	655	680	178,5	250	150	32	22	34	198	140	636

Diameter ØD3 is to be calculated depending on the height of the pedestal, H.
 $(D3 = D2 + 2 \times (H - t1) \times \tan 10^\circ)$

The height H is to be determined for each vessel, but standard height is 500 mm, 1000 mm and 1500 mm.

For more details on the guide roller, see Guide Roller Type ISO 13755, on page 160.

Note: The measurements in tables may vary between different models. Sotra Anchor & Chain AS can not be hold responsible for any deviate between tables and delivered equipment.