

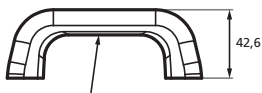
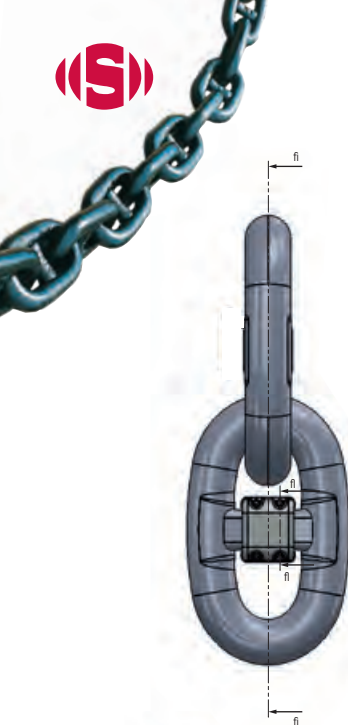


VARIOUS

# ANODE

FOR STUDLINK ANCHOR-CHAIN

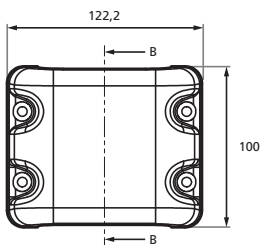
ZINC



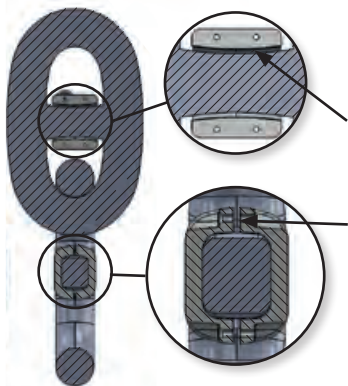
Inner side walls have the same contouring as the link shaft



Section B-B



Each half has a mass of 1.5 kg



A clearance of 5 mm between the anode and the link shaft has been added on either side, to avoid conflict due to deviances.

A clearance of 6 mm between the two anodes have been made to ensure that they clamp against the link shaft when bolts are tightened.

**Note:** The measurements in tables may vary between different models. Sotra Anchor & Chain AS can not be hold responsible for any deviate between tables and delivered equipment.