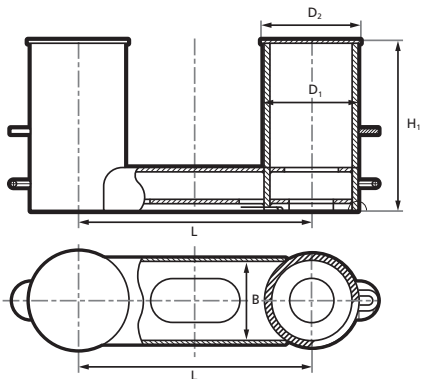




TOWING AND MOORING EQUIPMENT

DOUBLE BITT BOLLARDS

ISO 13795



Nominal size	L	B	H1	D ₁	D ₂	SWL		Towing (Eye splice)	Calculated weight
						Mooring (Eight belay)	Two-rope		
mm	mm	mm	mm	mm	mm	t	t	t	Kgs
150	400	155	330	165.2	185	5.5	5	10	29
200	500	205	395	216.3	240	8.4	6.7	13	46
250A	630	250	505	267.4	290	16	14	27	107
250B	630	250	505	267.4	290	13	11	22	91
300A	800	290	600	318.5	340	34	31	62	281
300B	800	290	600	318.5	340	19	16	36	166
350A	890	340	385	355.6	380	45	43	85	431
350B	890	340	685	355.6	380	25	22	50	241
400A	1000	380	730	406.4	430	61	53	106	570
400B	1000	380	730	406.4	430	33	27	67	322
450A	1100	425	770	457.2	480	77	62	124	712
450B	1100	425	770	457.2	480	39	30	78	379
500A	1250	480	830	508	530	101	77	154	960
500B	1250	480	830	508	530	47	33	93	465
550A	1380	520	900	558.8	580	115	83	165	1123
550B	1380	520	900	558.8	580	80	55	159	787
600	1550	560	950	609.4	630	143	97	193	1391

Note: The measurements in tables may vary between different models. Sotra Anchor & Chain AS can not be hold responsible for any deviate between tables and delivered equipment.