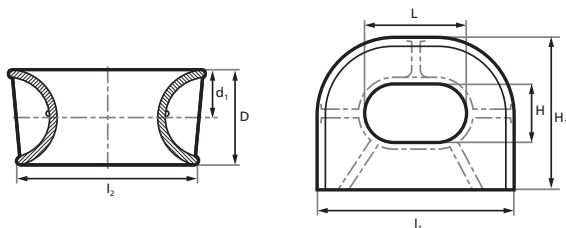




TOWING AND MOORING EQUIPMENT

DECK CHOCK

ISO 13729



Nominal size	l1	l2	H1	d1	SWL	Calculated weight
LxHxD	mm	mm	mm	mm	t	Kgs
250 × 200 × 214	488	453	427	108	23	73
300 × 250 × 286	614	565	551	144	43	142
350 × 250 × 333	716	660	601	168	56	222
400 × 250 × 381	820	754	652	192	70	310
450 × 250 × 381	870	804	652	192	72	322
500 × 250 × 381	920	854	652	192	78	337
400 × 250 × 428	870	796	701	216	90	434
450 × 250 × 428	920	846	701	216	93	452
500 × 250 × 428	970	896	701	216	95	472
500 × 400 × 428	970	896	851	216	91	528
500 × 250 × 525A	1068	1000	798	264	117	657
500 × 400 × 525A	1068	1000	948	264	118	724
500 × 250 × 525B	1074	1000	801	264	144	753
500 × 400 × 525B	1074	1000	951	264	141	825

Note: The measurements in tables may vary between different models. Sotra Anchor & Chain AS can not be hold responsible for any deviate between tables and delivered equipment.