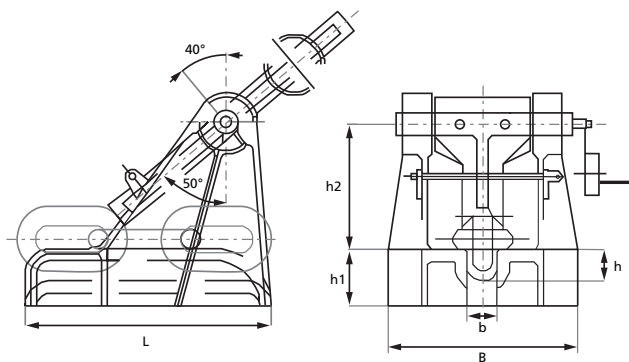




TOWING AND MOORING EQUIPMENT

CHAIN STOPPER

TYPE JIS F-2031



| Chain dia. mm | B mm | b mm | L mm | h mm | h1 mm | h2 mm | Weight Kgs |
|------------------|---------|---------|---------|---------|----------|----------|---------------|
| 58-60 | 600 | 95 | 780 | 102 | 182 | 394 | 495 |
| 62-64 | 630 | 101 | 835 | 109 | 191 | 421 | 582 |
| 66-68 | 660 | 107 | 885 | 116 | 200 | 446 | 701 |
| 70-73 | 700 | 115 | 950 | 125 | 212 | 478 | 846 |
| 76-78 | 750 | 123 | 1015 | 133 | 222 | 511 | 1014 |
| 81-84 | 800 | 134 | 1095 | 143 | 235 | 550 | 1268 |
| 87-90 | 850 | 143 | 1170 | 153 | 248 | 588 | 1798 |
| 92-95 | 900 | 151 | 1235 | 162 | 260 | 620 | 1769 |
| 97-102 | 950 | 161 | 1350 | 175 | 276 | 665 | 2277 |
| 105-107 | 1000 | 170 | 1400 | 185 | 289 | 703 | 2664 |
| 111-114 | 1050 | 180 | 1480 | 195 | 302 | 742 | 6054 |
| 117-122 | 1120 | 191 | 1585 | 207 | 318 | 790 | 3660 |

Note: The measurements in tables may vary between different models. Sotra Anchor & Chain AS can not be hold responsible for any deviate between tables and delivered equipment.