

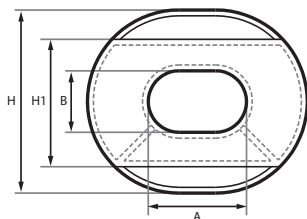


BULWARK CHOCK

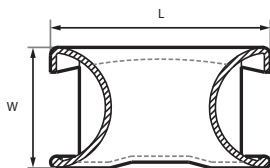
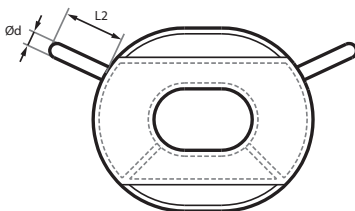
DIN 81915



Type A



Type B



Type	A	B	L	W	H	H1	Ød	L2	SWL	Calculated weight
	mm	mm	mm	mm	mm	mm	mm	mm	kN	Kgs
A2	160	115	360	200	315	225	-	-	20	26
A3	200	140	450	250	390	275	-	-	30	42
A5	250	180	550	300	480	340	-	-	50	72
A8	320	225	680	360	585	415	-	-	80	120
A12	400	270	840	440	710	500	-	-	120	185
A20	500	320	1020	520	840	595	-	-	200	285
A32	600	400	1300	700	1100	800	-	-	320	795
B2	160	115	360	200	315	225	35	125	20	30
B3	200	140	450	250	390	275	40	140	30	48
B5	250	180	550	300	480	340	45	160	50	80
B8	320	225	680	360	585	415	50	180	80	132

Note: The measurements in tables may vary between different models. Sotra Anchor & Chain AS can not be hold responsible for any deviate between tables and delivered equipment.