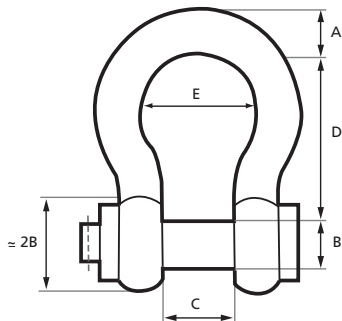




SHACKLE

BOLT TYPE ANCHOR SHACKLE

BOLT & NUT



WLL	A	B	C	D	E	Weight
Tonn	mm	mm	mm	mm	mm	Kgs
2	13	16	22	51	32	0.44
3.25	16	19	27	64	43	0.79
4.75	19	22	31	76	51	1.26
6.5	22	25	36	83	58	1.88
8.5	25	28	43	95	68	2.79
9.5	28	32	47	108	75	3.8
12	32	35	51	115	83	5.26
13.5	35	38	57	133	92	7
17	38	42	60	146	99	8.8
25	45	50	74	178	126	15
35	50	57	83	197	138	20.65
42.5	57	65	95	222	160	29.3
55	65	70	105	254	180	41
85	75	80	127	330	190	64.5
120	89	95	146	381	238	109.5
150	102	108	165	400	275	160
200	120	130	175	500	290	235
250	125	140	200	540	305	285
300	135	150	200	600	305	340
400	165	175	225	650	325	570
500	175	185	250	700	350	685
600	195	205	275	7000	375	880
700	205	215	300	730	400	980
800	210	220	300	730	400	1110
900	220	230	320	750	420	1295
1000	230	240	340	750	420	1475
1200	250	280	400	840	500	1900
1500	260	325	460	870	600	2800

Note: The measurements in tables may vary between different models. Sotra Anchor & Chain AS can not be hold responsible for any deviate between tables and delivered equipment.